

Health o meter[®]

P r o f e s s i o n a l

245EHR-2101

Digital Height Rod Installation Instructions

Thank you for your purchase of this Health o meter[®] Professional product. Please read this manual carefully, and keep it for easy reference or training. For User Instructions updates and revisions please go to: www.homscales.com

Note: The 245EHR-2101 Digital Height Rod Kit is compatible exclusively with 2101KL, 2101KG, 2101KL-BT and 2101KG-BT models with the letter “E” or “U” in the serial number and firmware versions 02.08.00 or higher.

Warning: Do not use the digital height rod as a handle.

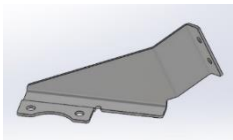
Upon receipt of the product, if damage is found, contact your shipper or a Health o meter[®] Professional representative immediately at 800-815-6615. Claims must be filed with the shipper as soon as possible after receipt. To avoid damaging when unpacking, do not use a box cutter, knife, scissors or any sharp object when opening the protective inner packaging. The following information details what you will find inside the carton as you unpack the parts for assembly. Set the carton aside for storage.

Tools Included: 5/32” and 5mm Allen Wrenches

Parts List:



Upper Mount Bracket



Lower Mount Bracket



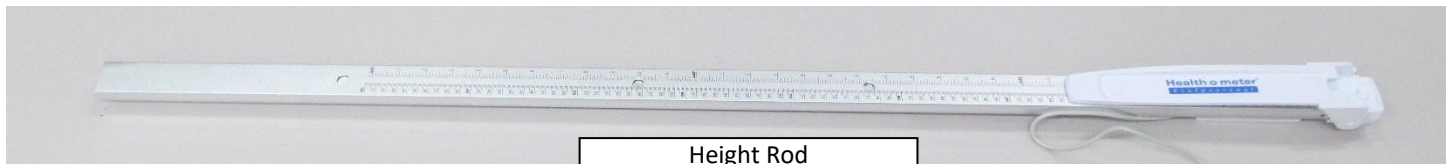
5/32” & 5mm Allen Wrenches



(4) Button Head Screws 1/4-20” x 1/4”



Velcro Fastener



Height Rod



PELSTAR, LLC 9500 West 55th St. McCook, IL 60525-7110 USA www.homscales.com

Health o meter[®] Professional 245EHR-2101

© Pelstar, LLC 2021

weigh**easier**[®]

1. Locate the left side handrail. Using the provided 5/32" Allen Wrench, remove the M6 x 12mm long screw located at the rear of the handrail. Do not remove the handrail. **Note: Do not discard the screw as it will be used to attach the Upper Mount Bracket.**

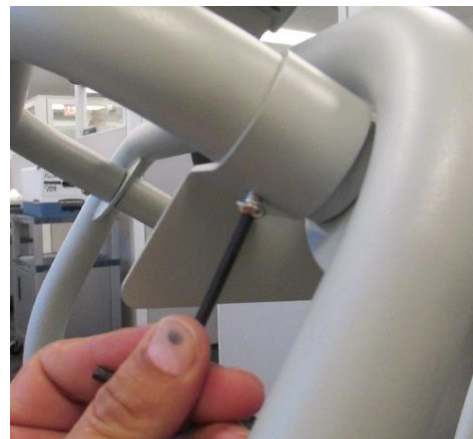
Left Side Handrail



Remove and save screw



2. Slide the Upper Mount Bracket over the rear handrail so that the hole in the bracket is facing downward. Insert the M6 x 12mm screw removed in the previous step into the hole on the bottom of the Upper Mount Bracket. Thread the screw into the handrail using the provided 5/32" Allen Wrench. **Note: Do NOT fully tighten the screw.**



3. Using the provided 5mm Allen wrench, remove the two M8 x 20mm screws from the inside of the left handrail base. **Note: Save the screws and washers.**



4. Place the Lower Mount Bracket on the inside of the left handrail base and align slots in Lower Mount Bracket with the threaded holes in the base. Thread the two M8 x 20mm screws and washers removed in the previous step into the threaded holes in the base. Use the provided 5mm Allen Wrench to thread the screws. Fully tighten the screws.



5. Remove the height rod from the plastic bag. Place the height rod so that the threaded holes at the rear of the rod align with the holes in the Upper Mount Bracket. Slide a provided 1/4" x 1/4" button head screw through the hole in the Upper Mount Bracket and thread it into the rear of the height rod. **Do not fully tighten the screw.**





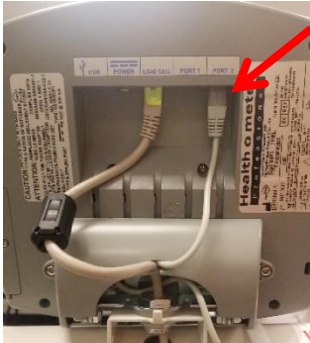


6. Align the holes in the Lower Mount Bracket with threaded holes at the rear of the height rod. Slide a provided 1/4" x 1/4" button head screw through the hole in the Lower Mount Bracket and thread it into the rear of the height rod. **Do not fully tighten the screw.**



7. Thread another screw into the second hole in the Upper Mount Bracket. **Do not fully tighten the screw.**



<p>8. Thread another screw into the second hole in the Lower Mount Bracket. Do not fully tighten the screw.</p>	
<p>9. Fully tighten the M6 x 12mm screw into the hole on the bottom of the Upper Bracket using the 5/32" Allen Wrench.</p>	
<p>10. Fully tighten all four 1/4" x 1/4" button head screws into the rear of the height rod.</p>	
<p>11. Secure the height rod cable to the handlebars using the included Velcro fastener as shown.</p>	
<p>12. Secure the height rod cable and load cell cable into the display head bracket cover as shown. Plug the cable from the height rod into Port 2. Assembly is complete. If experiencing connection issues, contact Health o meter® Professional Scales Technical Support at 1-800-638-3722</p>	

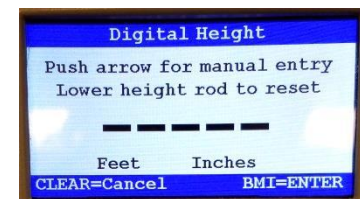
Digital Height Measurement

Note: The measuring range for digital height data is 3 ft 11.2 in – 6 ft 7.5 in / 120 cm – 202 cm. The digital height rod is compatible with Health o meter® Professional Scale models with the letter “E” or “U” in the serial number and firmware versions 02.08.00 or higher. If experiencing connection issues, contact Technical Support at 1-800-638-3722.

1. Make sure there is nothing on the weighing platform and the display shows “0.0”.
2. Ask the patient to step on the scale. The scale will begin to display the patient’s weight and will lock on the patient’s weight when completed. Depending on the movement of the patient on the scale, it may take several seconds for the scale to lock onto the weight.
3. After obtaining the patient’s weight, and with the patient remaining on the scale, press **BMI**.
4. A. If the height rod is set at its home position the display will read 3 ft 11.2 inches (when weighing in pounds) or 120 cm (when weighing in kilograms). Move to step 5.

B. If the height rod is not set at its home position, the display will instruct the user to reset the height rod to its home position or prompt the user to press an arrow key to enter height manually. Push the height rod down to its home position. When at home position the display will read 3 ft 11.2 inches (when weighing in pounds) or 120 cm (when weighing in kilograms). Move to step 5. **Note:** Resetting the height rod to the home position is only needed once after a power up. There is no need to reset for each height measurement if the scale has remained on.
5. With the headpiece folded down, slide the headpiece up to the estimated height of the patient. Then raise the headpiece into its horizontal position. Ensure that the patient’s posture is upright, and that the patient’s head is straight and level. Slide the headpiece down until it rests on the patient’s head. The display will read the patient’s height.
6. Once the height is determined, press **Enter**.
7. The display will show the patient’s BMI.

The BMI summary screen will display for approximately 10 seconds or until **Zero** is pressed to return to normal weighing mode. After exiting from the BMI summary screen if the patient is still on the scale the screen will display the weight measurement again.



Limited Warranty

What does the Warranty Cover?

This Health o meter® Professional product is warranted from date of purchase against defects of materials or in workmanship for a period of two (2) years. If product fails to function properly, return the product, freight prepaid and properly packed to Pelstar, LLC (see “To Get Warranty Service”, below, for instructions). If the manufacturer determines that a defect of material or in workmanship exists, the customer’s sole remedy will be replacement of the scale at no charge. Replacement will be made with a new or remanufactured product or component. If the product is no longer available, replacement may be made with a similar product of equal or greater value. All replaced parts are covered only for the original warranty period.

Who is Covered?

The original purchaser of the product must have proof of purchase to receive warranty service. Please save your invoice or receipt. Pelstar dealers or retail stores selling Pelstar products do not have the right to alter, or modify or in any way change the terms and conditions of this warranty.

What is Excluded?

Your warranty does not cover normal wear of parts or damage resulting from any of the following: negligent use or misuse of the product, use on improper voltage or current, use contrary to the operating instructions, abuse including tampering, damage in transit, or unauthorized repair or alternations. Further, the warranty does not cover natural disasters, such as fire, flood, hurricanes and tornadoes. This warranty gives you specific legal rights, and you may also have other rights that vary from country to country, state to state, province to province or jurisdiction to jurisdiction.

To get Warranty Service make sure you keep your sales receipt or document showing proof of purchase. Call (+1) 800-638-3722 or (+1) 708-377-0600 to receive a return authorization (RA) number, which must be included on the return label. Attach your proof of purchase to your defective product along with your name, address, daytime telephone number and description of the problem. Carefully package the product and send with shipping and insurance prepaid to:

Pelstar, LLC
Attention R/A# _____
Return Department
9500 West 55th Street
McCook, IL 60525

Extended Warranty Available*

This product is eligible for Health o meter® Professional ScaleSurance® Extended Warranty Program. ScaleSurance® extends the warranty period for an additional two years. This extension to the standard Limited Warranty can be purchased with new scales or for a facility’s existing scale before its current warranty has expired. To learn more, visit www.homscases.com/scalesurance/ or contact your medical supply distributor.

*Not available in all countries



PELSTAR®, LLC

9500 West 55th St. McCook, IL 60525-7110 USA

1-800-638-3722 or 1-708-377-0600

PLEASE REGISTER YOUR SCALE FOR WARRANTY COVERAGE AT:

www.homscases.com

Health o meter® is a registered trademark of Sunbeam Products, Inc. used under license. Health o meter® Professional products are manufactured, designed, and owned by Pelstar®, LLC. We reserve the right to improve, enhance, or modify Health o meter® Professional product features or specifications without notice.

© Pelstar®, LLC 2021